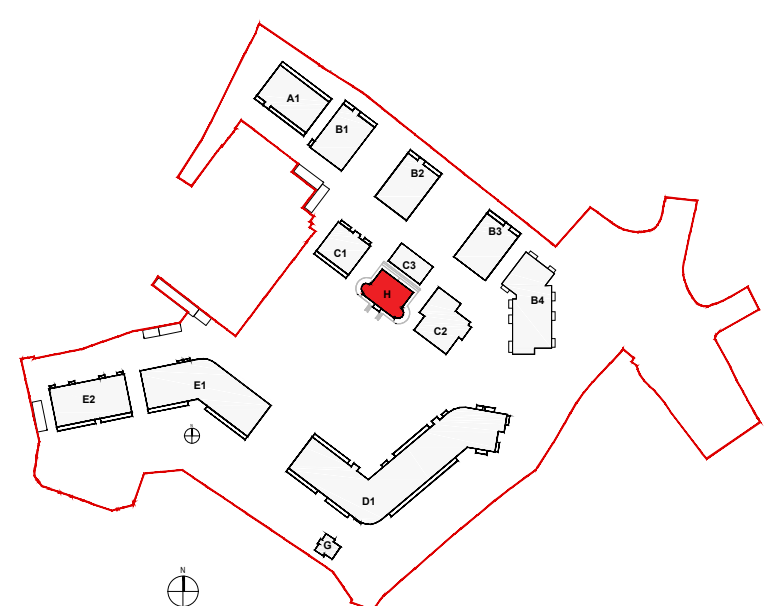


EXISTING FIRST FLOOR PLAN - St. Teresa's House

- NOTE:
- ORIGINAL SURVEY INFORMATION FROM MURPHY SURVEYS
 - DRAWING ASSEMBLED BY OMP
 - DRAWINGS TO BE READ IN CONJUNCTION WITH CONSERVATION ARCHITECTS REPORT



Revision Description	Date	Rev. No.	Issued by	<div><div>o mahony pike</div><div>architecture urban design email: info@omahonypike.com tel: +353 1 202 7400 fax: +353 1 283 0822 www.omahonypike.com</div><div>Dublin The Chapel Mount St. Anne's Milltown, Dublin 6 D06 XN52 Ireland</div><div>Cork 26 South Mall Cork City Co. Cork T12 R2RV Ireland</div></div>	Project No.:	Scale @ A1:
					1706A	1:50
					Project Lead:	DM
					Current Rev.:	
					Model No.:	1706A-OMP-PS01-00-DR-A-1400
					Purpose:	PLANNING
					Project:	Proposed SHD
					Location:	Lands at 'St. Teresa's', Temple Hill, Monkstown, Blackrock, Co. Dublin
					Client:	Oval Target Limited
					Drawing Title:	Existing First Floor Plan - St. Teresa's House
					Drawing No.:	1706A-OMP-PS01-02-DR-A-1402

Figured dimensions only to be used. This drawing is copyright of O'Mahony Pike Architects Ltd. All information is shared as per approved use in accordance with BS1192(2007) + A2(2016), Table 5; Standard Codes for Suitability of Models and Documents. If 'Information Approval Check' is empty, this information has been shared at S0 - WIP.

Submittal - Checked By - Date